

PATRIOT = HOMES =



FRANKLIN

Farmhouse Elevation

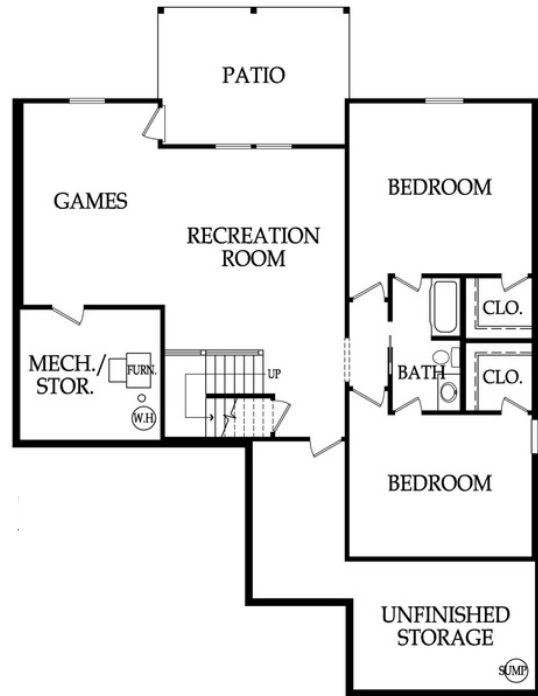
Reverse 1.5-Story
4 Bedrooms | 3 Baths
3,011 Square Feet

8315 NW 90th St. | \$689,900

Main Level



Lower Level



STANDARD FEATURES

- Walk Out Homesite
- 8' Double Front Door
- 14' Entry Ceiling
- Hardwood Floors in Entry, Great Room, Dining Room, Kitchen, Pantry, & Drop Zone
- Gas Cooktop & Walk-in Pantry in Kitchen
- Gas Fireplace in Great Room
- Tray Ceiling, Feature Wall, & Private Access to Covered Deck in Master Bedroom
- Dual Shower Heads, Free-standing Tub, & Bluetooth Audio System in Master Bath
- Walk-in Master Closet with Three-Season Storage
- Metal spindles, High-traffic Carpet & Wood End Caps on Stairs
- Ceramic Tile Floors in Wet Areas
- 12' x 16' Covered Deck & Patio
- 30-Year Composite Roof
- 22' Deep Garage with 8' Insulated Steel Doors & Openers
- Low-E Double Pane Vinyl Windows
- 9' Foundation Walls
- High Efficiency 93% Lennox Furnace
- Whole House Humidifier
- 50-Gallon Gas Water Heater

PatriotHomesKC.com | Info@PatriotHomesKC.com | 816-429-8144 |    

Information is considered accurate at the time of publication and is subject to change without advance notice. Renderings are not to scale and measurements are approximate. Colors, finishes, and building materials shown may vary from the actual home. Last updated 02/22/23.

