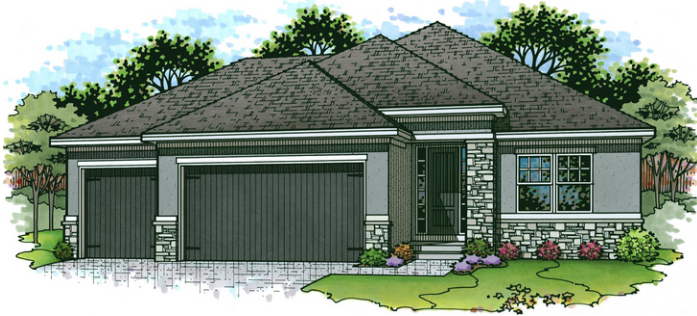


PATRIOT = HOMES =



HARRY S TRUMAN

Traditional Elevation | Level Homesite

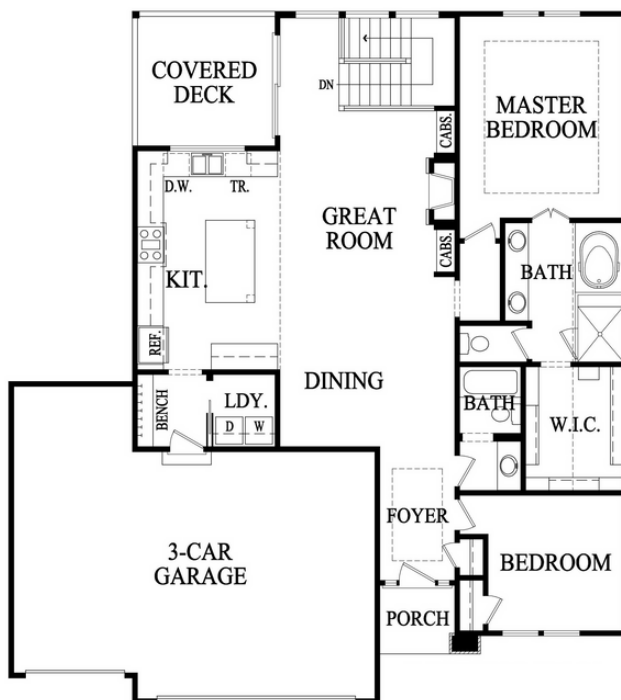
Reverse 1.5-Story

4 Bedrooms

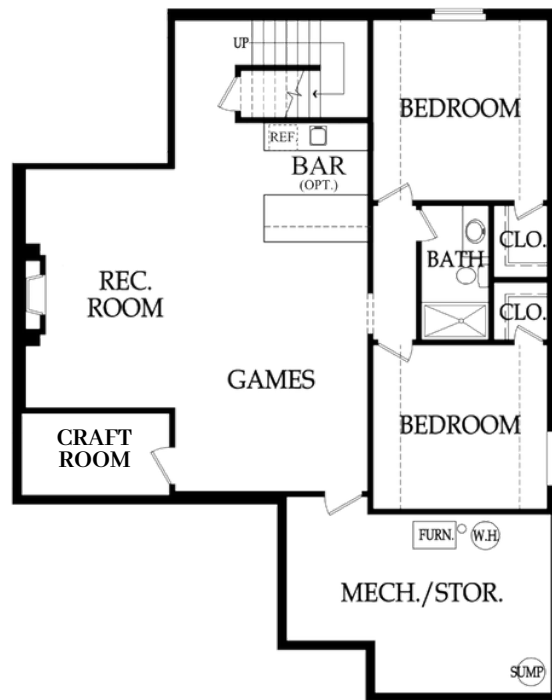
3 Bathrooms

2,643 Square Feet

Main Level



Lower Level



STANDARD FEATURES

- 8' Front Door & 12' Entry Ceiling
- Hardwood Floors in Entry, Great Room, Dining, Kitchen, & Mudroom
- Gas Range & Built-in Pantry in Kitchen
- Gas Fireplace & Built-in Cabinets in Great Room
- Metal Spindles, High-traffic Carpet, & Wood End Caps on Stairs
- Soaker Tub with Quartz Deck in Master Bath
- Glass-Enclosed Zero Entry Walk-in Shower with Quartz Seat, Dual Shower Heads, & Bluetooth Audio in Master Bath
- Three-Season Storage in Master Closet
- Fireplace in Rec Room
- Ceramic Tile Floors in Wet Areas
- 11' x 12' Covered Deck/Patio
- 30-Year Composite Roof
- 20' Deep Garage with 8' Insulated Steel Doors & Openers
- Low-E Double Pane Vinyl Windows
- 9' Foundation Walls
- High Efficiency 93% Lennox Furnace
- Whole House Humidifier
- 50-Gallon Electric Water Heater



For more information:
Sandy Maag & Tricia Vulje
816-602-3406
CadenceVillas@ReeceNichols.com

