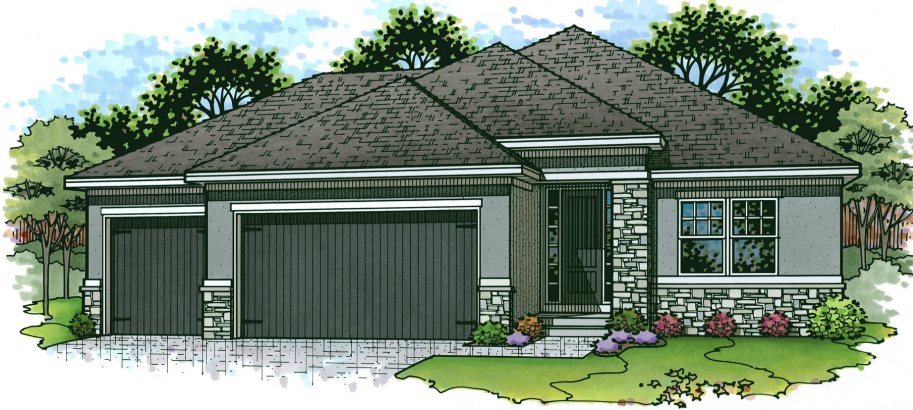


PATRIOT = HOMES =

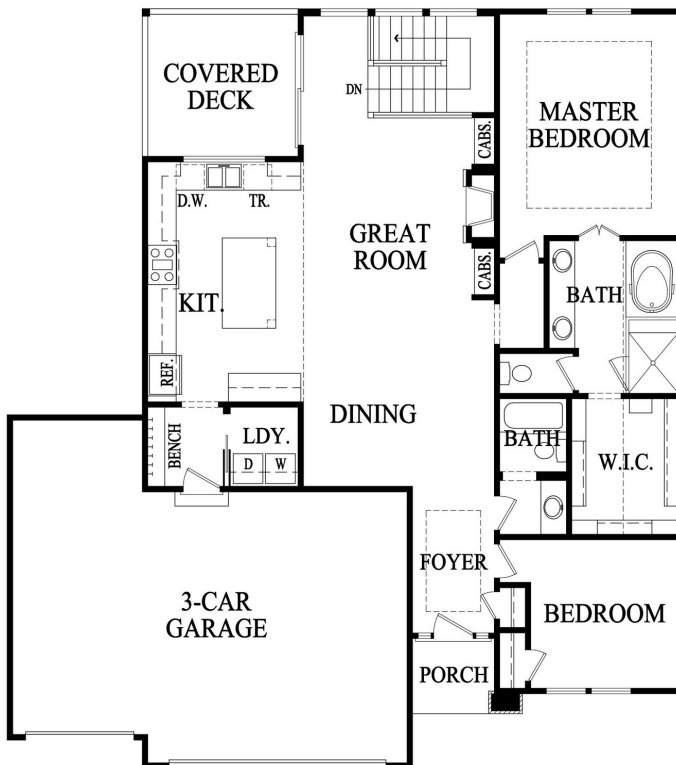


HARRY S TRUMAN

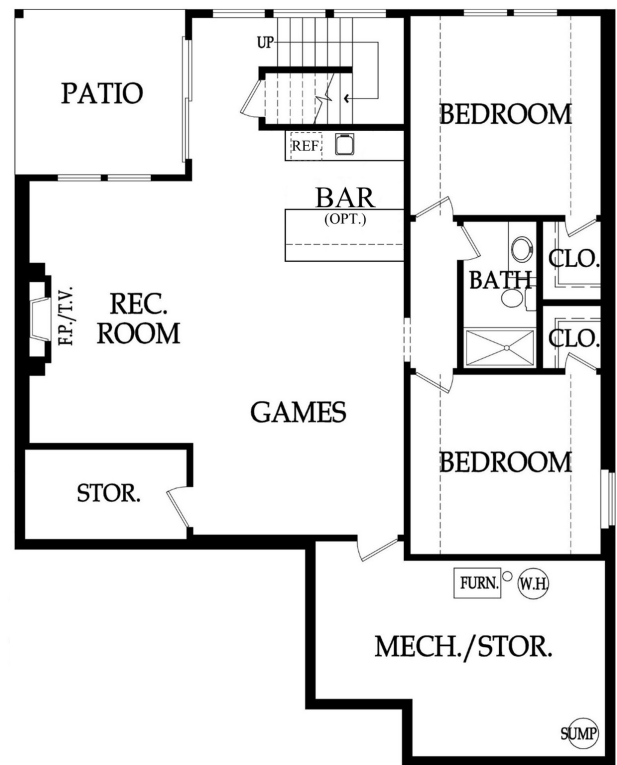
Traditional Elevation

Reverse 1.5-Story
4 Bedrooms | 3 Baths
2,643 Square Feet

Main Level



Lower Level



STANDARD FEATURES

- 8' Front Door & 12' Entry Ceiling
- Hardwood Floors in Entry, Great Room, Dining Room, Kitchen, & Drop Zone
- Gas Range & Built-in Pantry in Kitchen
- Gas Fireplace & Built-in Cabinets in Great Room
- Soaker Tub with Quartz Deck, Glass-Enclosed Zero Entry Walk-in Shower with Quartz Seat, & Bluetooth Audio in Master Bath
- Three-Season Storage in Master Closet
- Metal Spindles, High-traffic Carpet, & Wood End Caps on Stairs
- Gas Fireplace in Rec Room
- Ceramic Tile Floors in Wet Areas
- 11' x 12' Covered Deck & Patio
- 30-Year Composite Roof
- Two 20' Deep & One 24' Deep Garage Stall(s) with 8' Insulated Steel Doors & Openers
- Low-E Double Pane Vinyl Windows
- 9' Foundation Walls
- High Efficiency 93% Lennox Furnace
- Whole House Humidifier
- 50-Gallon Electric Water Heater

PatriotHomesKC.com | Info@PatriotHomesKC.com | 816-429-8144 |    

Information is considered accurate at the time of publication and is subject to change without advance notice. Renderings are not to scale and measurements are approximate. Colors, finishes, and building materials shown may vary from the actual home. Last updated 10/10/23.

