

# PATRIOT = HOMES =



## TAFT

*Farmhouse Elevation*

Reverse 1.5-Story

3 Bedrooms

3 Bathrooms

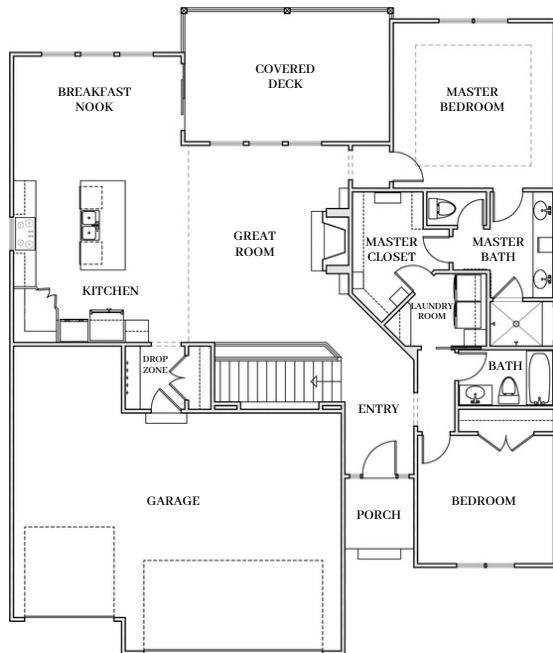
Approx. 2,700 sq. ft.



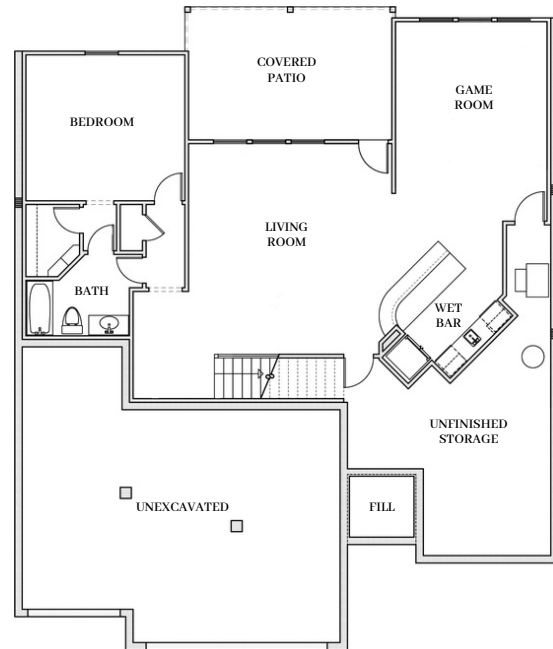
St. Jude Children's  
Research Hospital

St. Jude Dream Home®  
Giveaway

Main Level



Lower Level



## ST. JUDE DREAM HOME® FEATURES

- 8' Front Door
- Hardwood Floors in Entry, Great Room, Dining, Kitchen, Pantry, & Drop Zone
- Gas Cooktop & Walk-in Pantry in Kitchen
- Gas Fireplace in Great Room
- Metal Spindles, High-traffic Carpet, & Wood End Caps on Stairs
- Dual Shower Heads & Bluetooth Audio System in Master Bath
- Ceramic Tile Floors in Wet Areas
- Finished Lower Level with Wet Bar
- 12' x 18' Covered Deck & Patio
- 30-Year Composite Roof
- 21' Deep Double Bay & 24' Deep Single Bay Garage with 8' Insulated Steel Doors & Openers
- Low-E Double Pane Vinyl Windows
- 9' Foundation Walls
- High Efficiency 93% Lennox Furnace
- Whole House Humidifier
- 50-Gallon Electric Water Heater

For more information, visit [DreamHome.org](http://DreamHome.org) or call 1-800-301-4565

Information is considered accurate at the time of publication and is subject to change without advance notice. Renderings are not to scale and measurements are approximate. Colors, finishes, and building materials shown may vary in the actual home. Last updated 10/26/22.

