



TRUMAN 3-CAR

Traditional Elevation

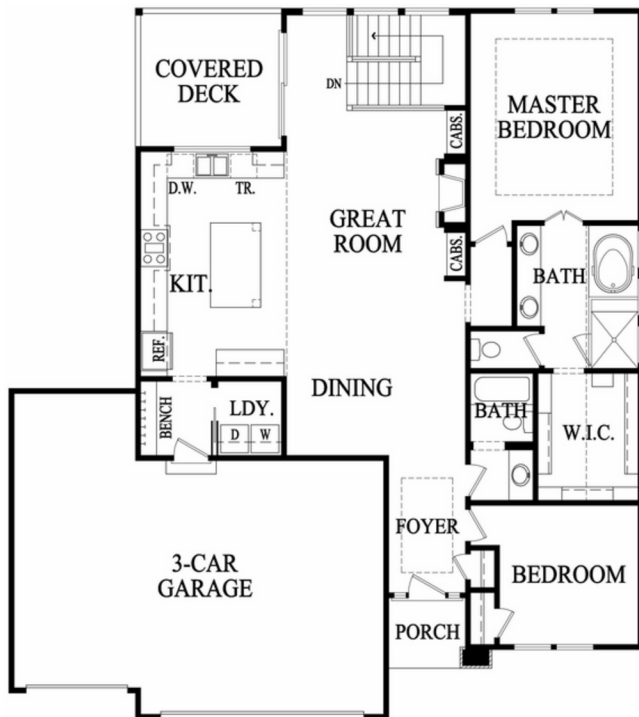
Reverse 1.5-Story

4 Bedrooms

3 Bathrooms

2,643 Square Feet

Main Level



Lower Level



STANDARD FEATURES

- 8' Front Door & 12' Entry Ceiling
- Hardwood Floors in Entry, Dining, Kitchen, & Drop Zone
- Gas Range & Built-in Pantry in Kitchen
- Gas Fireplace & Built-in Cabinets in Great Room
- Metal Spindles, High-traffic Carpet, & Wood End Caps on Stairs
- Freestanding Tub in Master Bath & Zero Entry Walk-in Shower
- Built-in Drop Zone Bench
- Ceramic Tile Floors in Wet Areas
- 11' x 12' Covered Deck/Patio
- 30-Year Composition Roof
- 20' Deep Double Bay & 23' Deep Single Bay Garage with 8' Insulated Steel Doors with 1 opener
- Low-E Double Pane Vinyl Windows
- 9' Foundation Walls
- High Efficiency 93% Lennox Furnace
- Whole House Humidifier
- 50-Gallon Electric Water Heater

